

# 275 Billerica Rd. Chelmsford, MA



## 13,600 SF Office/ Warehouse Space Available

Total Building Size: 50,047 SF  
Space Available: 13,600 SF  
Office: 6,400 SF  
Warehouse/Manufacturing: 7,200 SF  
Zoning: Industrial  
Ceiling Height: 14' clear  
Parking: 4 spaces/1000 SF  
Building Type: Single story steel frame &  
decorative block

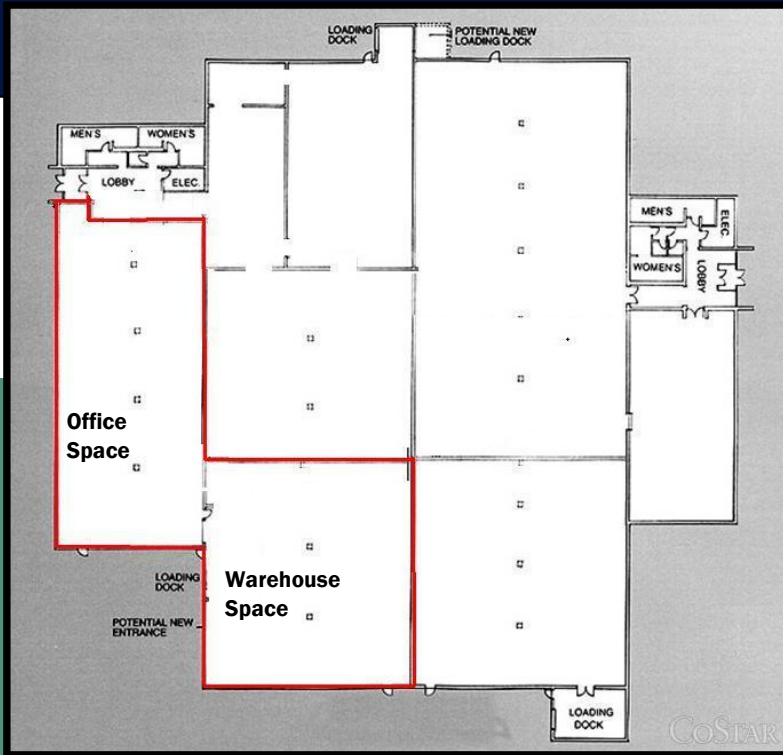
Heating System: Forced hot water-gas  
Air-Conditioning: 100% throughout  
Sprinklers: Throughout (wet)  
Loading: One (1) tailboard dock  
Lighting: Fluorescent  
Electrical: 400 amps @ 480V  
Flooring: Reinforced concrete  
Water/Sewer: Municipal

**O'Brien Commercial Properties, Inc.**  
44 Central Street, Berlin, MA 01503  
978-838-9828 PHONE  
978-838-9829 FAX

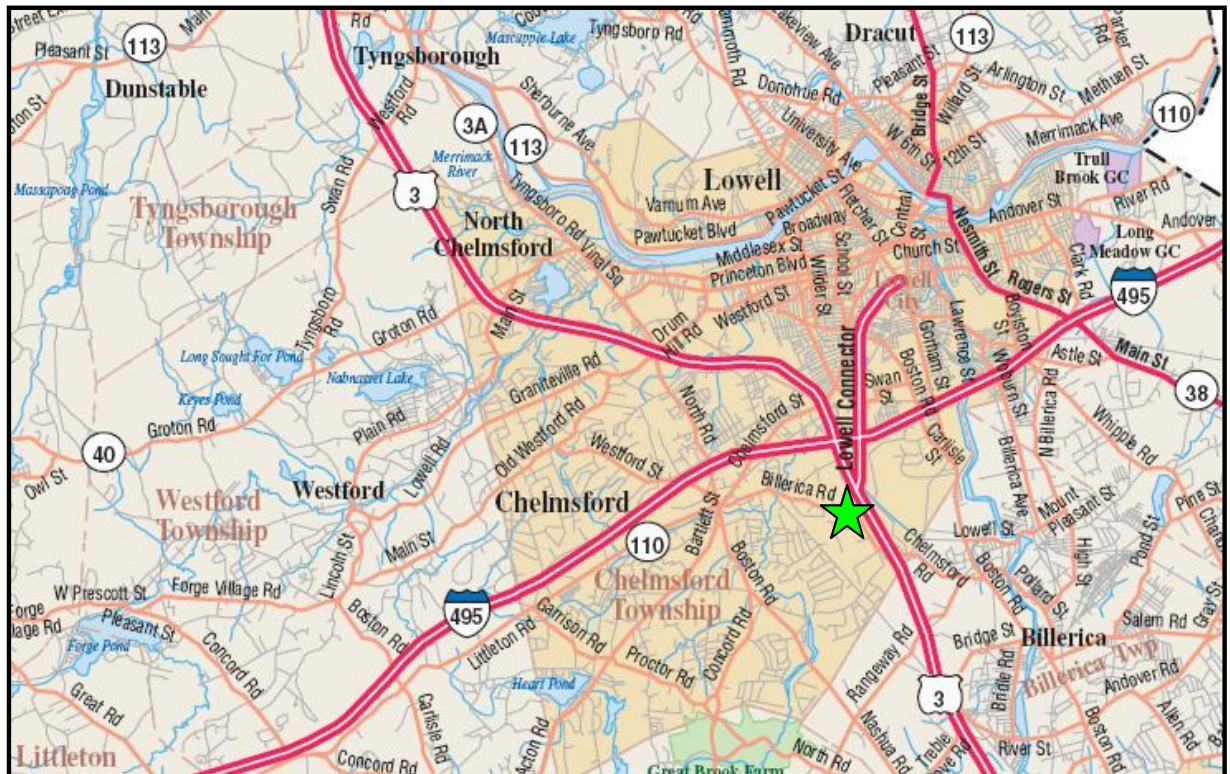
COMMERCIAL  
**O'BRIEN**  
PROPERTIES, INC

[www.obriencommercial.com](http://www.obriencommercial.com)

# 275 Billerica Rd. Chelmsford, MA



275 Billerica Rd. is located conveniently on Rt. 129, right off of Route 3 and I-495



**O'Brien Commercial Properties, Inc.**  
44 Central Street, Berlin, MA 01503  
978-838-9828 PHONE  
978-838-9829 FAX

COMMERCIAL  
**O'BRIEN**  
PROPERTIES, INC

[www.obriencommercial.com](http://www.obriencommercial.com)